



TURN TWELVE MINUTES INTO LASTING IMPACT

Empower families, enhance your practice,
and save time with every visit.

Every day, families come in with more questions than you can answer in a single appointment. GeriScope gives you the tools to extend your care outside the exam room—clear guidance families trust, branded materials that reflect your practice, and data that proves results.

Just as the book ***What to Expect When You're Expecting*** prepares new parents for every stage of pregnancy, GeriScope Guides equip families for the common challenges of caring for an elderly loved one.

Join today at no cost and turn short visits into meaningful, measurable care.



www.GeriScope.com/Providers



TheMap – Last Nine Chapters of Life

What To Expect In The Future?

Each older adult journey is unique in duration and challenges, but there are common events caregivers and their loved ones face. Geriscope's goal is to help families anticipate challenges, avoid obstacles, and make informed decisions, allowing them to maintain awareness of both the immediate issues and future transitions. Patients and families use The Map, The Compass, and The Guides to navigate life's last chapters.



In the following pages, you'll find a snapshot of each Geriscope Guide that delivers practical, easy-to-use resources that prepare families for what's coming next, from driving decisions to end-of-life planning.



TheCompass – Activities of Daily Living

A Way to Measure Their Loved One's Independence

A senior's quality of life is built on two sets of actions:

- **Activities of Daily Living (ADLs)**—personal care tasks like bathing, dressing, and eating.
- **Instrumental Activities of Daily Living (IADLs)**—everyday life skills including cooking, paying bills, and managing medications.

We introduce caregivers to ADLs and IADLs, explaining what each one entails, and share the Katz Index and Lawton-Brody Scale so they can see where a loved one may need extra support or when tasks like managing finances should shift to someone else.

Additionally, we recommend building an action plan with regular reviews, especially after a new diagnosis or hospital stay.

Family caregivers are best positioned to spot changes, share details with the medical team, and shape realistic goals of care because they spend significantly more time with their loved ones than will occur in an office visit.

These periodic ADL and IADL reviews also give family and friends a clearer view of their loved one's health trajectory, making it easier to prepare for what's ahead.



Families Ask, We Show.

- Are there tools to measure my loved one's independence so we know what's going on?
- Where is a list explaining the six Activities of Daily Living (ADLs), including what to watch for, why each one matters, and how to improve performance.
- Provide examples of the eight Instrumental Activities of Daily Living (IADLs), describe why they are important, and what families can do to help.
- How do ADLs and IADLs differ?
- How can we use ADLs and IADLs to show what type of assistance is needed?





Family Caregivers – The Elder Care Backbone

Who's Really Doing The Work

Family members who accompany seniors on appointments often see themselves as “just helping out,” but in reality they’ve stepped into the role of informal caregiver. Naming the role matters because it shows they’re not alone. Nearly 59 million Americans are traveling the same road. By understanding what unpaid and untrained caregiving really looks like, families can be more prepared, ask for support sooner, and manage both daily challenges and major life transitions with greater confidence.



Families Ask, We Show.

- What do I have in common with other senior caregivers?
- Who's typically receiving support?
- What types of ADL, IADL, nursing, and emotional care are they providing?
- How do chronic conditions influence longevity and family caregiving tenure?
- What are the physical, financial, and emotional impacts of this role?



TheCar – When Should They Stop Driving?

One Wrong Turn Can Change Everything

Driving means independence, but aging can make it dangerous, if not deadly. GeriScope allows caregivers to recognize when it's time to stop driving, what health issues impact safety, and how to find real alternatives so their loved one doesn't feel stranded.

Families Ask, We Show.

- What are the senior driving accident risks?
- How can we spot the warning signs of declining driving ability?
- How do vision, memory, and physical changes impact driving?
- Which strategies and adaptive tools extend driver independence?
- What is the reality about transportation alternatives and why are they limited?





TheMoves – Downsizing Without the Stress

Too Much Stuff, Too Little Space. Where To Start?

Moving involves more than just packing—it's often about decluttering current home for safety or downsizing their loved one's belongings to fit into a family member's home or senior living community. GeriScope walks them through the entire moving process, from preparation to unpacking and preserving memories without being buried in stuff.



Families Ask, We Show.

- When is it time to consider a move for safety, lifestyle, or financial reasons?
- How do major life transitions signal that downsizing may be necessary?
- What are the steps from planning, prepping, packing, moving, and getting settled?
- How does the 5-box decluttering strategy (keep, store, trash, donate, sell) work?
- How can we honor memories while letting go of treasures?



TheHome – Choosing the Right Living Option

The Right Home = The Right Care

A loved one's ADL and IADL capabilities determines the support they require. GeriScope lets caregivers match elder needs to the right living option for their current condition. From aging in place to assisted living or a nursing home, we provide a detailed side-by-side comparison so they can avoid choosing the wrong solution.

Families Ask, We Show.

- How do aging in place, independent living, assisted living, and nursing homes compare?
- Can ADLs and IADLs help us determine which option is the best fit?
- What are the true costs and benefits of senior housing?
- Which questions should I ask to evaluate quality before choosing a location?
- What financing options are available — Medicaid, VA benefits, or long-term care insurance?





TheHelp – Support Without Scams

The Right Aid From People They Can Trust

One bad hire can cost them thousands or put their loved one in danger. GeriScope summarizes the roles and responsibilities of the different types of healthcare providers so they can find the right professionals. We also address senior scam prevention.



Families Ask, We Show.

- How do we differentiate between medical specialties and roles—doctors, nurses, aides, therapists, and specialists?
- How do we pick a doctor to coordinate their care?
- What is the best way to build a strong senior support network?
- How can we avoid common senior scams?
- What should we ask to hire right the first time, every time?



TheTalk – Discussing the End of Life

The Conversation No One Wants to Have—But Must

No one wants to talk about death. But avoiding the conversation can leave families guessing when critical decisions need to be made and their loved one can no longer speak for themselves. GeriScope permits families to start the discussion now—so senior wishes are clear, legally documented (advance directives and power of attorney), and accessible when it matters most. Because talking early isn't just about planning—it's about peace of mind for them and for you.

Families Ask, We Show.

- Why is it urgent to have end-of-life conversations before an emergency?
- What's the best way to document and store choices?
- How does naming a healthcare advocate or surrogate benefit us?
- What are the key topics we need to discuss – medical treatments, pets, possessions?
- Are there barriers to advance care planning in underserved communities?





TheCrisis – Surviving the ER and What’s Next

ER Visits Are Terrifying—Be Prepared

Emergency room visits are scary—and the journey doesn’t stop there. What happens after? Rehab? A skilled nursing facility? Back home with assistance? Discharge options come at families fast. GeriScope shares wisdom on what to bring, what to ask, and explains the five most common recovery paths so they’re prepared to absorb information, push for the right care, and prevent a hospital return.



Families Ask, We Show.

- What do experienced caregivers bring to the ER and hospital for a smoother visit?
- What should I know about post-hospital recovery recommendations?
- What are the five most common hospital discharge pathways, and implications?
- Are there service differences between skilled nursing, rehab, and home health?
- How can we prevent readmission and ensure the best recovery?



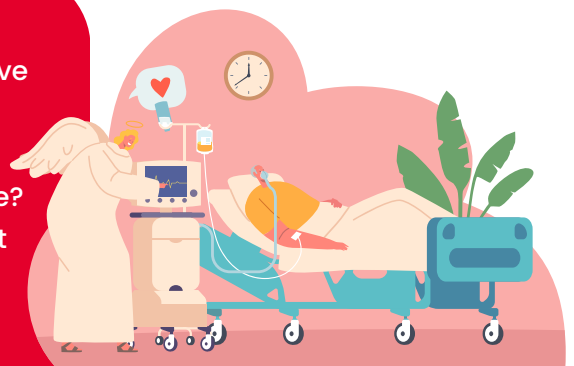
TheEnd – Heroic Measures or Comfort Care?

The Hardest Choice: Life Support or Letting Go?

Not all life-saving measures improve quality of life. Some cause more harm than good. GeriScope guides families through end-of-life options to make the right choice for their loved one depending on their current condition and prognosis for recovery.

Families Ask, We Show.

- What are the differences between hospice and palliative care?
- When should we explore palliative care?
- Which end-of-life services will we receive from hospice?
- How do historical racial and ethnic experiences impact end-of-life decisions?
- Does comfort care affect quality of life and provide a peaceful passing?





TheDeath – Honoring Their Wishes After They're Gone

Saying Goodbye: Funeral Planning and Final Affairs

Loss makes every decision harder—funeral planning, burial or cremation, organ donation. The last thing they want is confusion, stress, or family disagreements at an already painful time. GeriScope equips families to plan ahead, ensuring their wishes are clear, legally documented, and easy to find and follow. From selecting a final resting place to understanding funeral costs and required paperwork.



Families Ask, We Show.

- Why does pre-planning funeral arrangements reduce stress and confusion?
- What are the final resting place options – burial, cremation, and eco-friendly?
- Who protects us from overspending on funeral arrangements?
- What urgent matters must be handled in the first two weeks after death?
- How do we organize and access important documents when needed?



TheGrief – Experiencing Loss and Moving Forward

Coping with Grief: What's Normal and When to Seek Help

Grief isn't just one feeling—it's a journey, and it's different for everyone. Anticipatory grief starts before their loved one is even gone. Acute grief can feel overwhelming, and for some, complicated grief makes it impossible to move forward. GeriScope gives families knowledge to better understand what they're experiencing, what's normal, and when it's time to seek support.

Families Ask, We Show.

- What are the differences between anticipatory, common, and complicated grief?
- How does grief impact older adults differently?
- When does grief become Prolonged Grief Disorder?
- How can I cheer up others without saying the wrong thing?
- What are meaningful ways to honor their memory while moving forward?



Turn Tough Questions Into Easy Answers In 3 Simple Steps

Register. Customize. Track.

How to Get Started with GeriScope

Step 1: Register for Partner Perks

You're already here — congratulations, you've completed Step 1! Now you're ready to customize your materials and track results.

Step 2: Customize Family Handouts

Give patients, residents, and families answers before they ask.

- **Edit Profile.** Add company name, address, and phone to customize handouts.
- **Pick Products.** Choose your cards, flyers, posters, and more.



- **Get Coupon Code.** We'll assign an exclusive patient and family discount code.
- **Print and Ship.** We'll handle production and direct delivery to your door at no cost to you.
- **Share Handouts.** Give benefits to patients and families.

Step 3: Track and Report Program Results

Gain valuable insights and proof of program success from GeriScope.

- **Track Downloads.** We'll record use of exclusive the coupon code.
- **Report Activity.** You'll receive quarterly reports on popular guides and trends.

Your information and that of your patients stays private. If you'd like access to specific chapters or include your logo, just send us a note — we'll jump on a quick call to get you set up.

WHAT FAMILIES FIND

A PEEK INSIDE GERISCOPE GUIDES

The periscope for older adult caregiving from car keys to care plans. See the answers your families will have on hand.



**CINDY DAVIS, FOUNDER
AND PRESIDENT**

214.334.8895
cindy@geriscope.com
www.geriscope.com